

# CITYSAFE

Christmas Deals 2017

WHILE  
STOCKS  
LAST

Save with the CitySafe Padlock  
Bundle and get 100 1A Key Blanks  
for FREE!



## 48 MIXED CITYSAFE PADLOCK BUNDLE

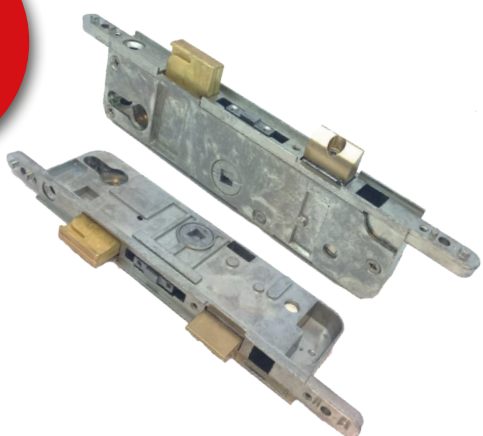
- The bundle includes a mixture of 48 CitySafe padlocks:  
12 x 20mm Brass, 12 x 30mm Brass,  
12 x 40mm Brass, 6 x 50mm Brass  
and 6 x 60mm Brass
- Each padlock has an anti-corrosion body  
and comes with a 10 year mechanical guarantee
- Bundle also includes x100 1A Key Blanks for absolutely FREE  
- normally 20p+VAT each!
- Each key blank carries the HD, JMA and Silca references
- Cut 30 key blanks for £3.50 each and the bundle pays for itself!
- Only available while stocks last!

Visit [www.citysafeuk.com](http://www.citysafeuk.com) for more deals!



## CENTRE CASE GEARBOXES

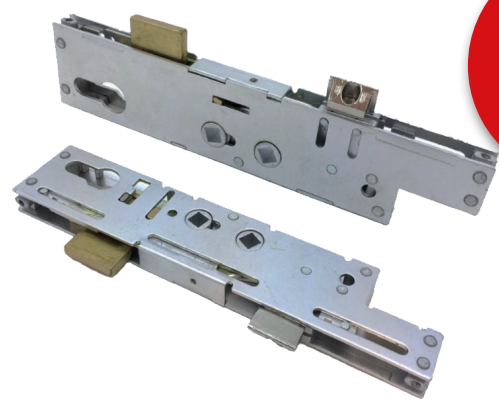
Now Only  
**£35.17**  
+VAT



FULLEX-STD0144-A-CASE (37.5mm Backset)

**TYPE A DOOR LOCK  
CENTRE CASE GEARBOX**

From Only  
**£21.13**  
+VAT



FULLEX-CRBCENT0001 (35mm Backset) **£21.13**  
 FULLEX-CRBCENT0003 (45mm Backset) **£22.69**  
 FULLEX-CRBCENT0004 (55mm Backset) **£25.45**

**CRIMEBEATER DOOR LOCK  
CENTRE CASE GEARBOX**

From Only  
**£27.15**  
+VAT



FULLEX-60024-CASE (35mm Backset) **£27.15**  
 FULLEX-60026-CASE (55mm Backset) **£30.28**  
 FULLEX-60028-CASE (45mm Backset) **£29.36**

**SL16 DOOR LOCK  
CENTRE CASE GEARBOX**

From Only  
**£17.59**  
+VAT



FULLEX-XLCENTREDUALSPIN (35mm Dual Spindle) **£17.59**  
 FULLEX-XLCENTREDUAL-45MM (45mm Dual Spindle) **£23.87**  
 FULLEX-XLCENTRESINGLESPIN (35mm Single Spindle) **£18.54**  
 FULLEX-XLCENTRESINGLE-45MM (45mm Single Spindle) **£23.87**  
 FULLEX-XLCENTRESPLITSPIN (35mm Split Spindle) **£20.79**

**XL DOOR LOCK  
CENTRE CASE GEARBOXES**

In November, you may have heard the awful story about the hunt for burglars who knocked on the door of a woman's flat and sprayed her in the face with a 'corrosive substance' before barging in and ransacking her home.

# PROTECT YOUR CUSTOMERS AGAINST DOORSTEP CRIME WITH 3 QUICK AND EASY TO INSTALL PRODUCTS



1



No door should be opened without first checking who is on the other side. Installing a door viewer will allow your customers to quickly see who has knocked on their door.

## DOOR VIEWERS (SPYHOLES)



2

Identity card entry slots are a great security accessory for protection against rogue traders and bogus callers. It allows your customers to get the caller to pass their ID through the slot without having to open the door. By law all tradespeople have to carry a form of identification! Simply lift up the latch on the inside to allow the caller to pass their ID through.

## IDENTITY CARD ENTRY SLOTS

3



There are many door chains available, however it is essential that your customers has a high security door chain installed to stop anyone being able to barge open their door once they unlock it. Make sure the door chain is 'Secured by Design' approved from the Association of Police Officers, meaning that it has passed many security tests.

## HIGH SECURITY DOOR CHAINS



Was ~~£13.68~~  
Now Only  
**£10.99+VAT**  
Save over £2

## GOLD OR CHROME BUNDLE IDENTITY SLOT, NARROW DOOR CHAIN + FREE DOOR VIEWER

Visit [www.citysafeuk.com](http://www.citysafeuk.com) for more deals!

# Save with Cash Box and Key Cabinet Bundles



Was ~~£23.65~~  
**Now Only**  
**£16.99+VAT**  
Save over £6!



**152MM, 200MM & 300MM  
CASH BOX BUNDLE**



Was ~~£28.05~~  
**Now Only**  
**£19.99+VAT**  
Save over £8!



**10, 20 & 45 HOOK KEY  
CABINET BUNDLE**



Visit [www.citysafeuk.com](http://www.citysafeuk.com) for more details!



Was ~~£125.95~~  
**Now Only**  
**£108+VAT**  
Save over  
£17!

## MONZA 1 KEY LOCKING

- £4,000 cash cover
- Key operated
- EN 1300 certified key lock with 2 keys
- Light grey (RAL 7035) finish
- Offers protection from fire and/or burglars
- ECBS certified burglar resistance in accordance with EN 14450 S2
- Flame retardant filling in accordance with DIN 4102 (not tested)
- 1 shelf which is adjustable in height
- 90 degree door opening
- Lock bolts on 3 sides
- 2 x base anchoring and 1 x back anchoring (anchors supplied)

External dimensions:  
300mm x 445mm x 400mm  
Content: 24 litres.



- £4,000 cash cover
- Key operated
- EN 1300 certified key lock with 2 keys
- Light grey (RAL 7035) finish
- Offers protection from fire and/or burglars
- ECBS certified burglar resistance in accordance with EN 14450 S2
- Flame retardant filling in accordance with DIN 4102 (not tested)
- 1 shelf which is adjustable in height
- 90 degree door opening
- Lock bolts on 3 sides
- 2 x base anchoring and 1 x back anchoring (anchors supplied)

External dimensions:  
450mm x 445mm x 400mm  
Content: 40 litres



Was ~~£151.80~~  
**Now Only**  
**£131+VAT**  
Save over  
£20!

## MONZA 2 KEY LOCKING

# DOM Panic Hardware

Application: Aluminium, steel, wooden doors,  
PVC profiles, emergency door exits and  
doors for heavy traffic areas



## CP100

- Certified EN 1125:2008 level 7 (max)
- More than 200,000 cycles opening / closing
- 1 locking point
- Bar dimension: 950mm

Was ~~£50~~  
**Now Only**  
**£40+VAT**  
Save over  
£10!



**CP100 PUSH BAR**



MBO  
with Turn  
Handle  
(Outside  
Access)

Was ~~£30~~  
**Now Only**  
**£24+VAT**  
Save over  
£6!



MBO  
with Lever Handle  
(Outside Access)

Was ~~£40~~  
**Now Only**  
**£32+VAT**  
Save over  
£8!

Exit Push Pad

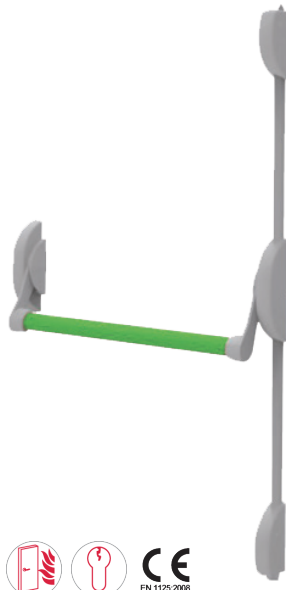


**PUSH PAD, KNOB OR LEVER VERSION**

## CP200

Was ~~£95~~  
**Now Only**  
**£76+VAT**  
Save over  
£19!

- Certified EN 1125:2008 level 7 (max)
- More than 200,000 cycles opening / closing
- 2 locking points
- Bar dimension: 950mm

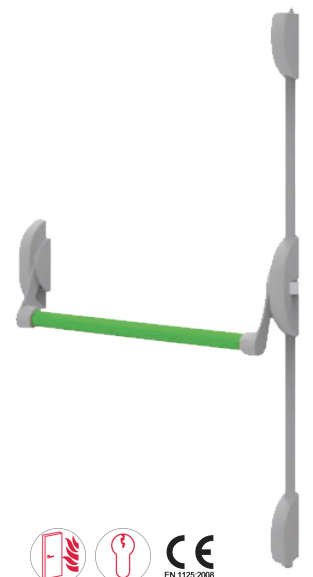


**2 POINT LOCKING SYSTEM**

## CP300

Was ~~£110~~  
**Now Only**  
**£88+VAT**  
Save over  
£22!

- Certified EN 1125:2008 level 7 (max)
- More than 200,000 cycles opening / closing
- 3 locking points
- Bar dimension: 950mm



**3 POINT LOCKING SYSTEM**

# Standard Door Handles

- High quality designed handle
- Made from either aero-space grade aluminium
- Tested to ASTM B117:2005 for 480 hours



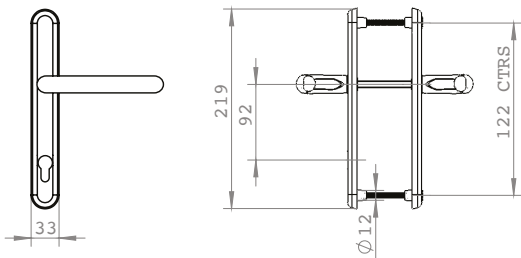
Was ~~£8.40~~  
**Now Only**  
**£6.16+VAT**  
Save over  
£2!



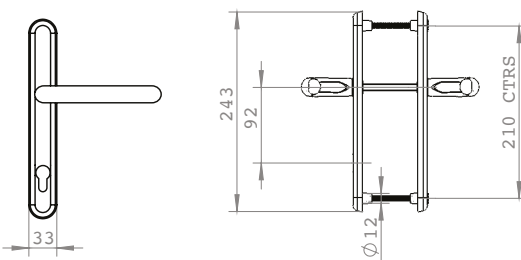
**STANDARD WHITE HANDLE**  
**219MM AND 243MM**

**BLACK HANDLE**  
**219MM AND 243MM**

219mm backplate



243mm backplate



Was ~~£84~~  
**Now Only**  
**£60+VAT**  
Save over  
£24!



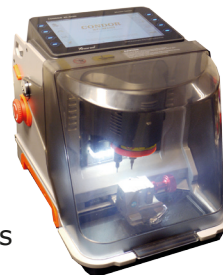
**MIXED LOTS OF 10 UNITS FOR £6 EACH**

Visit [www.citysafeuk.com](http://www.citysafeuk.com) for more deals!

# 4 EASY STEPS TO CAR KEY GENERATION

1

- Stand-alone: no need to connect to a computer
- It is ready to use in just 5 seconds
- Internal software can be updated for free
- It comes with 2 cutters and 2 tracers
- It includes 1 year subscription to Instacode
- Includes jaw M1 for all flat keys and M2 for all laser keys



Now Only  
£2999+VAT

## XHORSE CONDOR XC-MINI AUTOMATIC KEY CUTTING MACHINE (FOR CAR KEYS)

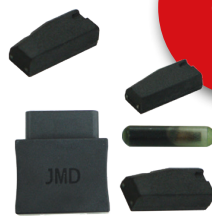
2



Chips  
from  
£4.99  
+VAT



Handy  
Baby and  
Chips  
£750  
+VAT



Handy  
Baby  
Now Only  
£379  
+VAT

## TRANSPONDER CHIP GENERATOR + CHIPS

3

The KeyDIY Luxury Display Case and Accessories includes:

- 1 Carry Case
- 20 Mixed Blades
- 43 Different Car Key Remotes
- 1 KD Mini Key Generator for SmartPhone



KeyDIY  
Case  
Now Only  
£349  
+VAT

## GENERATING CAR REMOTES

4

- Android system with a clear and user-friendly interface
- Large amount of videos help users to operate
- Maintenance database offers more powerful data
- Industrial design ensures that the tools works stably in tough environments
- One key update: Free upgrade for one year
- All in one, nothing is impossible!



Now Only  
£799  
+VAT

## OBDSTAR X300 DP TABLET KEY PROGRAMMER (UK EDITION)

Visit [www.citysafeuk.com](http://www.citysafeuk.com) for more details!